

State of Wyoming Corner Record

(In compliance with the *CORNER PERPETUATION AND FILING ACT*, Wyoming Statutes, 1997, Section 33-29-140, et. seq., and the Rules and Regulations of the Board of Registration for Professional Engineers and Professional Land Surveyors)

Reverse side of this form may be used if more space is needed.

Record of original survey and citation of source of historical information (if corner is lost or obliterated). Description of corner monumentation evidence found and/or monument and accessories established to perpetuate the location of this corner. Sketch of relative location of monument, accessories, and reference points with course and distance to adjacent corner(s) (if determined in this survey). Method and rationale for reestablishment of lost or obliterated corner.

G.L.O. Record: U.S. Deputy Surveyor, Edward D. Bright, September, 1868; 81.07 chains, Intersect 3d Corr line N 49 links West of Standard Cor to Secs 33 & 34 Tp 13 N Range 67W where I set a boulder 14 x 9 x 8 for closing cor to secs 3 & 4 Tp 12N R 67W...

Found: 1 1/2" Aluminum Cap on a No.5 x 24" rebar, marked RHW PE643LS. Also a loose 12" x 5" x 3" granite stone with what appeared to be faint marks of CC & 3. The 1 1/2" aluminum capped monument was found to be on the Third Standard Parallel between the found original monuments east and west.

Set: 2 1/2" x 30" aluminum pipe, 26" in the ground with a 3 1/4" aluminum cap marked as noted below. Set the 1 1/2" aluminum cap and rebar inside the set pipe and bury the loose marked stone west as memorials. Also set a 1" x 1" x 2" orange fluorescent magnetic reference module in the bottom of the monument hole. Set a 5' steel fence post witness north.

See back of this sheet for section subdivision detail.

Aluminum Cap Markings

T13N R67W
 S33
 S4 | S3
 T12N | R67W
 CC
 P.L.S. 2927

LARAMIE COUNTY CLERK
CHEYENNE, WY.

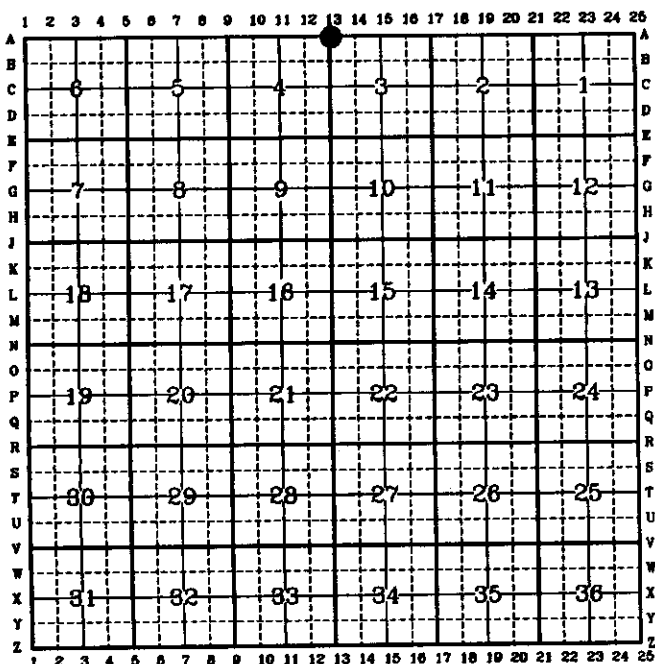
1999 JUN 21 AM 9:06

254544

Date of Field Work: January 2, 1999

Office Reference: A.V.I. Job No. 2-2085C

CROSS INDEX DIAGRAM



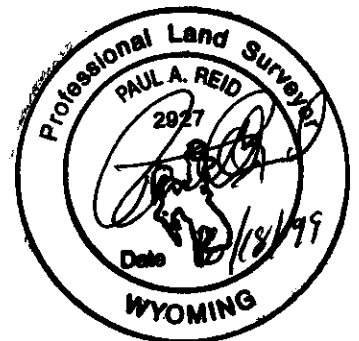
Firm/Agency, Address

Paul A. Reid, P.L.S.
 A.V.I., p.c.
 2035 Westland Road
 Cheyenne, WY 82001

Telephone Number:
 (307) 637-6017

This corner record was prepared by me or under my direction and supervision.

SEAL & SIGNATURE

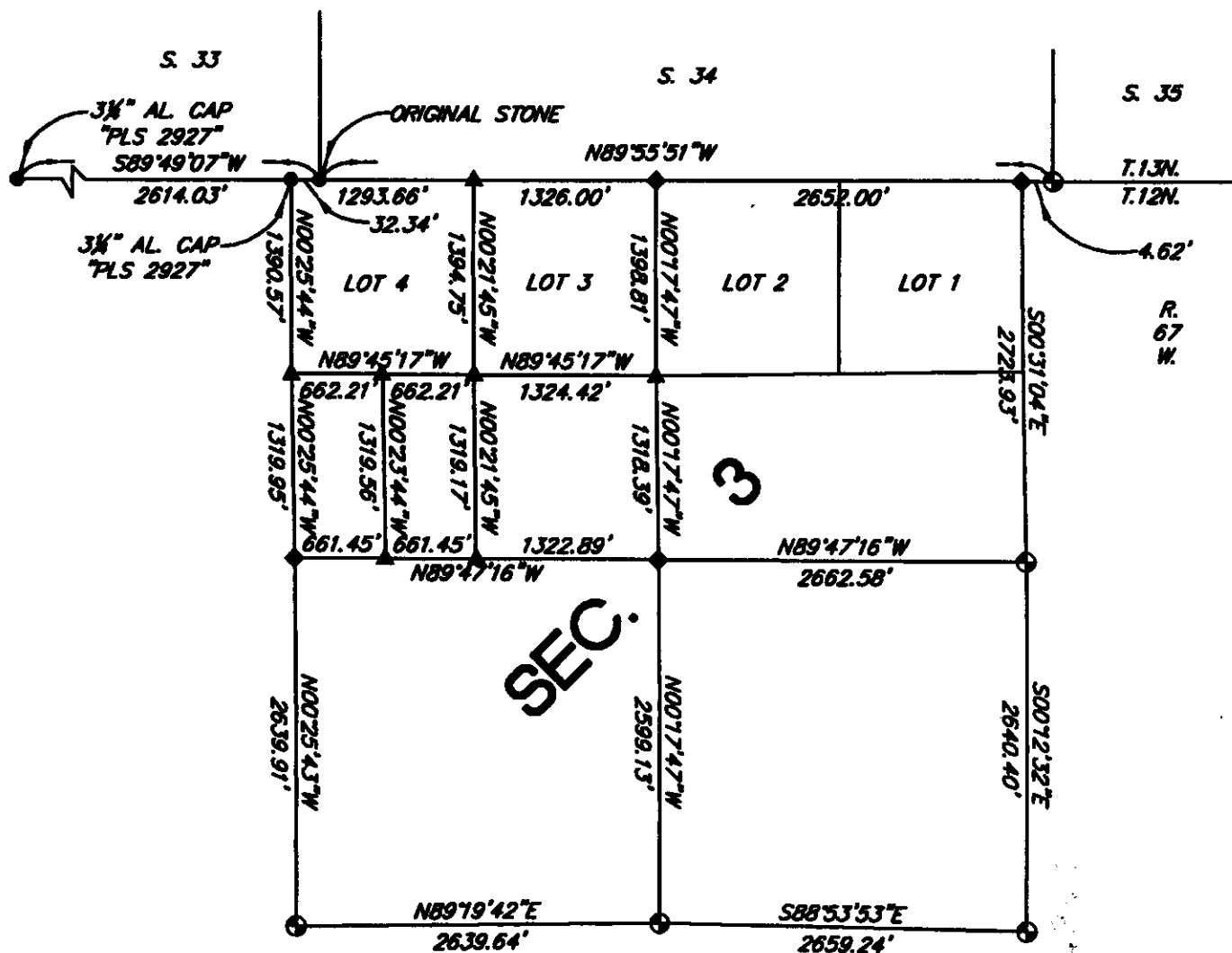


Corner Name: NW Cor.
 SBRPEPLS/PLSW: March 1994

Section: 3

T.12N., R.67W.; 6th P.M.

Cross-Index No.: A-13



SECTION SUBDIVISION DETAIL
(NOT TO SCALE)

LEGEND

- FOUND MONUMENT AS NOTED
 - ◆ SET 3 1/4" ALUMINUM CAP MARKED "PLS 2927"
 - ▲ SET 2 1/2" ALUMINUM CAP MARKED "PLS 2927"
 - ⊙ FOUND ORIGINAL STONE, RESET 3 1/4" AL. CAP MARKED "PLS 2927"
- BASIS OF BEARINGS: NAD 83 ($\Delta \alpha = 11'06''$ APPROX.)